



*Affordable and Reliable Marine Services*



**INTER-ISLE CONSTRUCTION &  
FABRICATION COMPANY LTD.**

***Dry-docking***

***Construction - Marine, Structural and Mechanical***

***Fabricating, welding and installing structural steel and supports, processing and interconnecting pipelines***

***Engineering maintenance on Process Plants, Offshore Platforms and marine Installations***

***Sandblasting, Water-blasting, and Industrial and Marine Painting***

***Repairs to Oil-Liquid tankers, Cargo Vessels, Barges, Tugs, Launches, and Pleasure Boats***

***Marine Engineering Consultants***

***Marine Equipment Rentals – Crane Barges, Deck Barges, Tugs, Launches***

***Equipment Rentals - Cranes, Forklifts, Welding Plants, light Towers, Compressors, etc.***

***Underwater Services***

**Operating Address:** Western Main Road, Chaguaramas, Trinidad, West Indies, Caribbean

**Mailing Address:** P.O. Box 4445, St. Anns Post Office, Port-Of-Spain, Trinidad, West Indies

**Telephone:** 868-634-4229/4266/2370

**Fax:** 868-634-4145

**Email:**[info@interislett.com](mailto:info@interislett.com)

**Website:**[www.interislett.com](http://www.interislett.com)

## COMPANY PROFILE

### INTRODUCTION

**Inter-Isle Construction & Fabrication Company Limited** began operations in 1989, providing fabricating and welding services to major structural construction companies in Trinidad and Tobago. Since then, our services have expanded to include dry-docking, marine construction, repairs to ocean-going vessels, sandblasting, water-blasting, industrial and marine painting, process plant engineering and maintenance, and equipment rentals.

We occupy a property at the Western Main Road, Chaguaramas, Trinidad The site is prime sea frontage at the North West Peninsular at Chaguaramas, comprising of seven (7) acres of land with a sea frontage of four hundred and eighty (480) feet in length. This facility is currently utilized by IICF as office and workshop, with a storage warehouse of 7,000 sq.ft. office facilities of 4,000 sq.ft., a wharf of 240 ft. by 30 ft. and a recently completed 360 ft. by 20 ft. Jetty. The electrical and water supply is excellent. Our services are geared towards meeting the requirements of our local and international customers.

#### ***Our Facility:***

The open area is available for a construction base and all-weather cargo yard. Generally our property is strategically located to service the shipping, marine construction, and offshore petroleum industries.



***Quality Assurance:***

We have implemented and follow guidelines put out by ISM (International Standard for Quality Management Systems). All ship repairs are carried out within the classification society guidelines and inspections. (Lloyds, DNV, BV, ABS.)

***Our Staff:***

Inter-Isle is manned and staffed by a management group of qualified specialists and technicians who are responsible for coordinating Inter-Isle's team of a highly skilled production workforce, some with over forty years' experience in the Marine Construction and ship repair industry. Inter-Isle's training and recruitment policy has enabled the company to maintain an adequate pool of skilled personnel. From our in-house training programs for tradesmen and engineers, we are able to develop and generate our own work force. At present, there are 100 skilled and experienced personnel employed at Inter Isle Construction and Fabrication. Our Team consists of surveyors, project engineers, certified quality assurance and quality control engineers, draughts men, paint specialists, certified NACE, machinists, electrical and mechanical specialists.



***Operations Management Team HS&E Management Team***

*Our Staff Continued:*



*Human Resource Department*



*HS & E Management Team*



## OUR SERVICES:

**Inter-Isle Construction & Fabrication Company Limited** takes pride in offering clients a broad range of marine construction services, ensuring project completion to schedule and budget conditions. With decades of experience in offshore and onshore construction, **IICF** is your worldwide single source solution provider. Our services cover the complete construction process from general maintenance to complete turn-key construction. With skilled construction staffs and experienced craftsmen committed to excellence, your next marine project will be handled with expertise from design through the entire construction life cycle. Drilling contractors, shipyards, vessel owners, oil and gas companies, and fabricators look to **Inter-Isle Construction & Fabrication Company Limited** to provide superior products, materials and craftsmanship.

### *Our services include:*

- Dry-docking
- Construction - Marine, Structural and Mechanical.
- Fabricating, welding and installing structural steel and supports, processing and interconnecting pipelines
- Engineering maintenance on Process Plants, Offshore Platforms and marine Installations
- Sandblasting, Water-blasting, and Industrial and Marine Painting.
- Repairs to Oil-Liquid tankers, Cargo Vessels, Barges, Tugs, Launches, and Pleasure Boats
- Marine Engineering Consultants
- Marine Equipment Rentals – Crane Barges, Deck Barges, Tugs, Launches
- Equipment Rentals - Cranes, Forklifts, Welding Plants, light Towers, Compressors, etc.
- Underwater Services





## **DRY-DOCKING SERVICES:**

In today's competitive market, you demand quality repair services with fast turnaround at minimum cost. More importantly, you need a repair company that listens to you and is responsive to your needs. **Inter-Isle Construction & Fabrication Company Limited** is your ideal partner, no matter the size of your repair job. Our shipyard takes a no-nonsense approach to providing quality repair services for tugs, barges, fishing vessels and specialized work boats with budgets and repair requirements. All this is backed by our guarantee of quick redelivery and competitive prices.

Our project managers work closely with you to understand your specifications, priorities and budget constraints. We assemble the right team of repair specialists for your job, with full cross-crafting capabilities and years of experience in small, medium and large vessel repair. This maximizes labor efficiency, providing superior value for your money. Our world-class facilities allow us to scale services to meet your needs. The Mappa (ideally suited for small and medium-sized vessels) is priced competitively with other companies' marine ways. Every job is backed by the same attention to safety and quality we give to our large ship repair customers, at competitive prices.

### ***We Offer a Floating Dry Dock and Docking Facilities as follows:***

- Overall length of floating dock 160 ft
- Distance between wing walls 50 ft
- Maximum draft of vessel in light condition 10 ft
- Maximum displacement of vessel in light condition 700 tons
- 300 ft x 20 ft Jetty

### ***Services Provided:***

- Fabrication, welding and steel repairs to vessel hull
- Tail shaft, propeller, rudder, piping, valves and machinery repairs
- Fresh water pressure washing
- Sand blasting and painting
- Our services are geared towards meeting the requirement of our local and international customers
- All ship repairs are carried out within the classification society guidelines and inspections (Lloyds, DNV, BV, ABS)



## MARINE CONSTRUCTION:

Inter-Isle Construction is a full service marine construction contractor providing a broad range of marine construction and repair services on, above and under the water throughout the West Indies and Caribbean. We specialize in marine construction projects and have built our reputation by delivering innovative, cost effective solutions to our customers.

Our services include facility construction, dredging, repair and maintenance, building, pipeline construction as well as many specialty services such as salvage, demolition, diving, towing, underwater inspection and more. We are headquartered in Trinidad and Tobago.



## FABRICATION:

Inter-Isle Construction & Fabrication Company has earned a solid reputation providing quality fabrication services to the marine industry. Our company specializes in the repair of marine vessels with manufacturing efficiency and our unwavering commitment to quality and a job well done. Our advanced technology allows for welding, blasting and painting. We service tow boats, tugs, barges, supply boats, pleasure boats, casino boats and more.

## ENGINEERING MAINTAINENCE:

Inter-Isle Construction & Fabrication Company is the premier provider of marine construction and maintenance throughout the Caribbean. We use the latest techniques and equipment and continually train our workers to provide high quality services.

Our engineering division is designed to meet any challenge our customers may be facing. Our engineering group is ready to deploy instantly throughout the Caribbean and extend from shore to ship.



## **GRIT BLASTING AND PAINTING:**

Inter-Isle Construction And Fabrication provides a complete grit and ultra high pressure cleaning system for all marine vessels. Our technicians located in Trinidad and Tobago have extensive experience with a diverse range of marine vessels including tankers, container ships, bulk carriers, cruise ships, military vessels, barges, tugs and fishing boats.

Inter-Isle Construction And Fabrication offers its customers the latest techniques in both marine grit blasting and high pressure systems. We take extra care to properly prepare the surface of all vessels as we understand that proper preparation is essential to the success of the project. Our quality engineers monitor each vessel to ensure all projects are completed on time and within budget.

## **VESSEL REPAIRS:**

Located in Trinidad, West Indies in the Caribbean, Inter-Isle Construction And Fabrication offers full service vessel repair with a dry dock. The facility includes machine shops, fabricating, and equipment repair. Our engineers and mechanics are highly trained to handle any type of repair from minor to complex vessel repairs. We regularly perform maintenance on many types of vessels including tankers, barges, tugs, cruise, cargo, fishing vessels and more.

Our services are provided on a year-round basis fully staffed with mechanics and machinists to provide you with quick, quality service.

## **MARINE ENGINEERING:**

Internationally recognized, Inter-Isle Construction And Fabrication provides experts in waterfront structural engineering and marine construction. Our services provide our clients with a complete catalog of engineering services for existing marine structures, port, military, oil and transportation clients.

All services are performed by registered engineers and divers who understand the unique conditions of the marine industry. We will provide comprehensive reports and solutions to keep your project on budget.



## **UNDERWATER SERVICES:**

Inter-Isle Construction And Fabrication provides well trained and certified divers ready to perform a wide variety of underwater maintenance and repair services. These services include vessel inspection, hull cleaning and repair, underwater welding, underwater construction, port inspection, salvaging projects and more.

## **MARINE EQUIPMENT RENTALS:**

Inter-Isle Construction And Fabrication is the leader in the Caribbean for marine equipment repair. In addition to highly qualified and experienced marine technicians, we offer modern equipment and facilities. Our marine equipment and parts inventory is one of the largest in the Caribbean.



### ***SOME OF OUR EQUIPMENT AVAILABLE FOR RENTAL***

- 1) 200 Ton Truck Crane
- 2) 60 and 90 Ton Truck Crane
- 3) Tank Barges with 1800 BBL and 10,000 BBL capacity
- 4) Welding Plants
- 5) Compressors from 175 CFM to 900CFM
- 6) Pumps - 4" to 12"



## SAFETY ASSURANCE

Our personnel follow the guidelines put out by ISO 9002 and are trained in basic safety. We also comply with the Safety Procedures that are stipulated by our client companies.

### a) **Safety Meetings:**

Our personnel stress the importance of conducting safety meetings at the beginning of every work day which will cover drills for various accidents.

### b) **Daily Log Sheets:**

Assist in recording any mishaps which may have occurred the previous days so that these situations can be addressed.

### c) **Equipment Placement:**

Fire Extinguishers (Fully charged) being placed at strategic points in the work area in cases of hot work applications. First Aid Kit (Fully stocked) on site at all times. Cutting Gas Bottles to be placed in bottle stands when in use.

### d) **Safety Wear:**

*Safety Boots, Safety Helmets, Safety Glasses* as normal attire. *Ear Plugs or Muffs* to be worn around loud machinery. *Harness* to be worn when working at heights exceeding 3'. *Dust Mask* to be worn in an environment where impure particles are present. *Respirator* to be worn in an environment where toxic fumes are present.

All equipment owned and used by the company is inspected and certified on a regular basis.

These are but a few points in our ongoing safety awareness programme, our detailed Environment and Safety Policies and Procedures document is available upon request.





## CLASSIFICATION SOCIETIES

*Our company has received certification from the following organizations :-*

**(1) Noble Denton and Associates Inc.**

**(Marine and Engineering)**

**(Consultants and Surveyors)**

Westlake Park Boulevard

Suite 750

Houston, Texas 77079

United States of America

**(2) Det Norske Veritas**

c/o Westmoorings Marine Services Limited

Buccaneer Drive

Westmoorings

Port of Spain

Trinidad, West Indies

**(3) Lloyds Register of Shipping**

72 South Quay

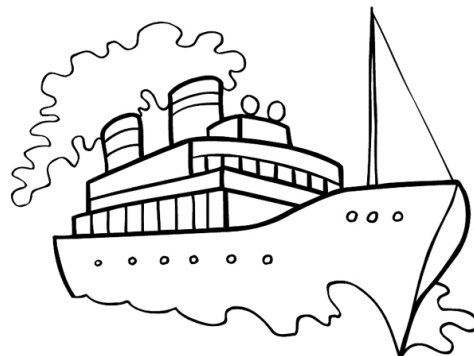
Port of Spain

Trinidad, West Indies

**(4) ABS – American Bureau of Shipping**

U.S. Coast Guard

(5) Our welding on other construction meet the specifications of the **American Petroleum Institute (API)** codes.





## OUR CLIENT LIST INCLUDES:

- **ARCADIAN TRINIDAD LIMITED**
- **BP EXPLORATION DE VENEZUELA**
- **BRITISH GAS T&T LTD.**
- **CLIFFS DRILLING TRINIDAD OFFSHORE**
- **COASTAL DIVING SERVICES LIMITED**
- **COLOURED FIN COMPANY LIMITED**
- **DELTA LOGISTICS LIMITED**
- **ENSR CORPORATION**
- **EOG RESOURCES (T'DAD) LTD. (ENRON)**
- **HALLIBURTON TRINIDAD LIMITED**
- **HARBERT INTERNATIONAL EST. SA**
- **NATIONAL GAS COMPANY OF TRINIDAD AND TOBAGO LIMITED(NGC)**
- **PETROLEUM COMPANY OF TRINIDAD AND TOBAGO LIMITED(PETROTRIN)**
- **PRIDE VENEZUELA**
- **SCHLUMBERGER TRINIDAD INC.**
- **SUNDOWNER OFFSHORE INT'L**
- **TITAN MARITIME INDUSTRIES**
- **TODCO (TRANSOCEAN)**
- **TRINMAR LIMITED**
- **UNITED STATES COAST GUARD**





## SAMPLES OF PROJECTS COMPLETED

### Tim B

#### *Before and After Repairs*



### Capitol 4000

#### *Before and After Repairs*





## Winddancer

### *Before and After Repairs*





*Modification, Assembly for Testing, Disassembly and Loadout of Sundowner Rig - 2001*



*Fabrication & Installation of Launch Landings and Well Support Systems for Trinmar*





INTER-ISLE CONSTRUCTION &  
FABRICATION COMPANY LTD.

*Complete rebuild of the Enron/Halliburton Dock at their Chaguaramas load-out base Facility*



**Left side** - Fabrication of Walkway, Drilling Template and upper structure for BP Venezuela, offshore platform.

**Top Right** – Extensive repairs to Jackup Barge and Installation of crane and pedestal.

**Bottom Right** – Fabrication of Decks for offshore oil platforms, east coast Trinidad.



*Cutting a supply vessel in half and extending it by twelve feet.*





INTER-ISLE CONSTRUCTION &  
FABRICATION COMPANY LTD.

*Construction of a Cruise Ship Jetty and Reclamation of 4 ½ acres of dredge fill. Roadtown, Tortola B.V.I.*





## MAJOR PROJECTS COMPLETED

### **Dry-Docking - M.V. Wind Dancer**

Hull Bottom steel repairs

- Renewal of Longitudinal bulkheads
- Bottom steel plating
- Vertical Angle Stiffeners
- Transverse Frames
- Fabrication of foundation brackets for bearings
- Installation of Bearings

### **Schlumberger:**

Repairs to Barge "Gabriella"

- Fabrication and installation of 2 Sand Silos, header tank, manholes, access way, service hatch, OSHA approved hand rails, upper deck, walkway around upper deck etc
- Installation of Pre-Fabricated FRAC Tanks, accommodation containers, generator room, work lab, pumps, mixer etc
- Reinforced frames below deck to support additional weight

### **BHP:**

Repairs to T23

- The installation of handrails
- The fabrication and installation of a custom built manifold
- Securing of a crane on deck

### **Trinmar Limited**

Fabricate and install Launch Landing

### **Pride Foramer Venezuela**

Renewal of Piping System on Rig Pride Venezuela.

### **Harbert International Establishment S.A. Quito Ecuador**

Fabrication of Riser Guide (200 feet long x 60 inches diameter).

**Trinmar Limited**

Fabrication and installation of eight (8) Well Support Structures.

**Sundowner Offshore Int'l**

Offload Rig in sections from Barges, Modify and assemble entire Rig System for testing then Disassemble and Loadout on to Barges.

**Trinmar Limited**

Fabrication and Installation of (8) Well Support Structures in the Soldado Field.

**Trinmar Limited**

Fabrication and Installation of (3) Launch Landings at S498, S759 and GP1

Fabrication and Installation of (6) Well Support Structures at S792, S742, S754, S789

(No Name Well south of S792, and S665

**Eog Resources (T'DAD) LTD (ENRON)**

Complete rebuild of the dock facility in Chaguaramas

**Lurgi Caribbean Limited**

Fabricating pipe racks and handrails for the Titan Methanol Project at Point Lisas.

**TRINMAR**

Major steel repairs to the Tug 'Soldado Peter Percharde' and complete refurbishment of the 'Barge T-201'.

**TITAN MARITIME INDUSTRIES, INC.**

Fabrication of cofferdam and spreader bars for the salvage of an accommodations barge in Venezuela.

**Petrotrin (Point A Pierre).**

Fabricating and installing a launch landing, removing the damaged ramp, fabricating, and reinstalling the replacement ramp, driving piles and installing four dolphins at Berth 2 (N) at Pointe a Pierre.

**LGZ Steel Partners**

This project involved piling and the installation of Over Water Conveyor Bent Foundations at Point Lisas.

**Tidewater Marine W.I. Ltd.**

One of our main locally based marine customers. We have performed steel repairs to several of their workboats based here in Trinidad. For example we have done repairs to the Milton Tide, Ade Tide, Count Fleet, Gulf Fleet 55, and the StoneBright. All repairs were carried out under the strict guidelines of the Classification Society and the U.S. Coast Guard. Tidewater has been very impressed with both the quality and speed of work.

**Hydroship**

Inter-Isle also offers some engineering support re the installation of Generator systems on board vessels, for example, the M.V. Haugvik.



### **Halliburton**

IICF has supplied welders and equipment on a refit for a two year drilling program. All high-pressure piping welded to API 1104 codes. We have also provided general fabrication services on board the drilling rig 'Adriatic VII'.

### **B.P. Venezuela**

Inter-Isle has supplied a host of welding expertise for various welding procedures for B.P. Venezuela. We have Fabricated, Sandblasted and Coated Well Templates, Tripods, Walkways and all Piling for their exploration in the Pedernales field in Venezuela.

### **The United States Coast Guard**

Inter-Isle has completed repairs for the Grenadian Coast Guard 'Tyrrel Bay' on behalf of the USCG.

### **British Gas**

Inter-Isle has provided a variety of welding procedures for British Gas.

### **PETROTRIN**

Pointe-A-Pierre, Trinidad

#### ***Berth No. 6***

#### ***Trinidad and Tobago Oil Company Limited***

Pointe-A-Pierre, Trinidad (now PETROTRIN - Petroleum Company of Trinidad and Tobago Limited) Repairing, Sandblasting and Painting S.P.M. Platform and Piles No's 1-9

Renewing Launch Landing Platform.

### **B.P. VENEZUELA.**

Fabricating tubular sections for Barge Park Pilings. All welds on XL systems to API code.

### **TECHINT, ARGENTINA INC.**

Trinidad Project



***TRINTOC - Trinidad and Tobago Oil Company Limited***

Hydrogen Plant - Compression Facilities

Pointe-A-Pierre

(Now PETROTRIN - Petroleum Company of Trinidad and Tobago Limited)

Fabricating, welding, sandblasting, and painting of steel platforms, ladders, stairways, and hand-rails for the above Plant.

**RELLCO SERVICES CARIBBEAN LIMITED**

Port of Spain, Trinidad

*Refurbish Alumina Storage Facilities*

*ALCOA Steamship Company Inc.*

*Tembladora, Carenage, Trinidad*

Fabricating, Welding, Sand - Water Blasting, Structural modifications, and painting five(5) steel tanks for the storage of Alumina. Renew process piping, remove, repair, and reinstall overhead Conveyors, modify product loading systems and shipping facilities.

**Alcoa Steamship Company Inc.**

Tembladora, Carenage

*Repairs to G. Conveyor at Alcoa Steamship Co. Inc.*

Fabricating, welding, structural repairs, sandblasting and painting to entire G-Conveyor system. Mechanical fitting and alignment of all rollers on system - Troughing Idlers and Training Idlers.

**Balfour Beatty (Bahamas) Limited**

Tortola, British Virgin Islands

*Project - Wickhams Cay Harbour*

*Welding test Piles and Structural Frames. Fabricating, Butt-Welding, Sand Blasting, and Painting of Steel Tubular Piles of Twenty and Forty inch (diameters) for the Main Cruise Ship Jetty.*



## **Sand Blasting/Painting**

We sandblast and paint in accordance with the standards established by:-*NACE National Association of Corrosion Engineers*

*SSPC Steel Structures Painting Council*

## **PROJECTS COMPLETED**

### **TORTOLA, British Virgin Islands**

Fabricating, sandblasting and painting steel pipes for the construction of a harbour in Tortola for Balfour Beatty, (Bahamas) Limited.

### **TRINIDAD, Gulf of Paria, Chaguaramas**

Sandblasting and painting the offshore drilling barge OCEAN BARONESS whilst anchored in the Gulf of Paria for Diamond Offshore Drilling Inc. Houston, Texas, U.S.A.

### **TRINIDAD, Chaguaramas**

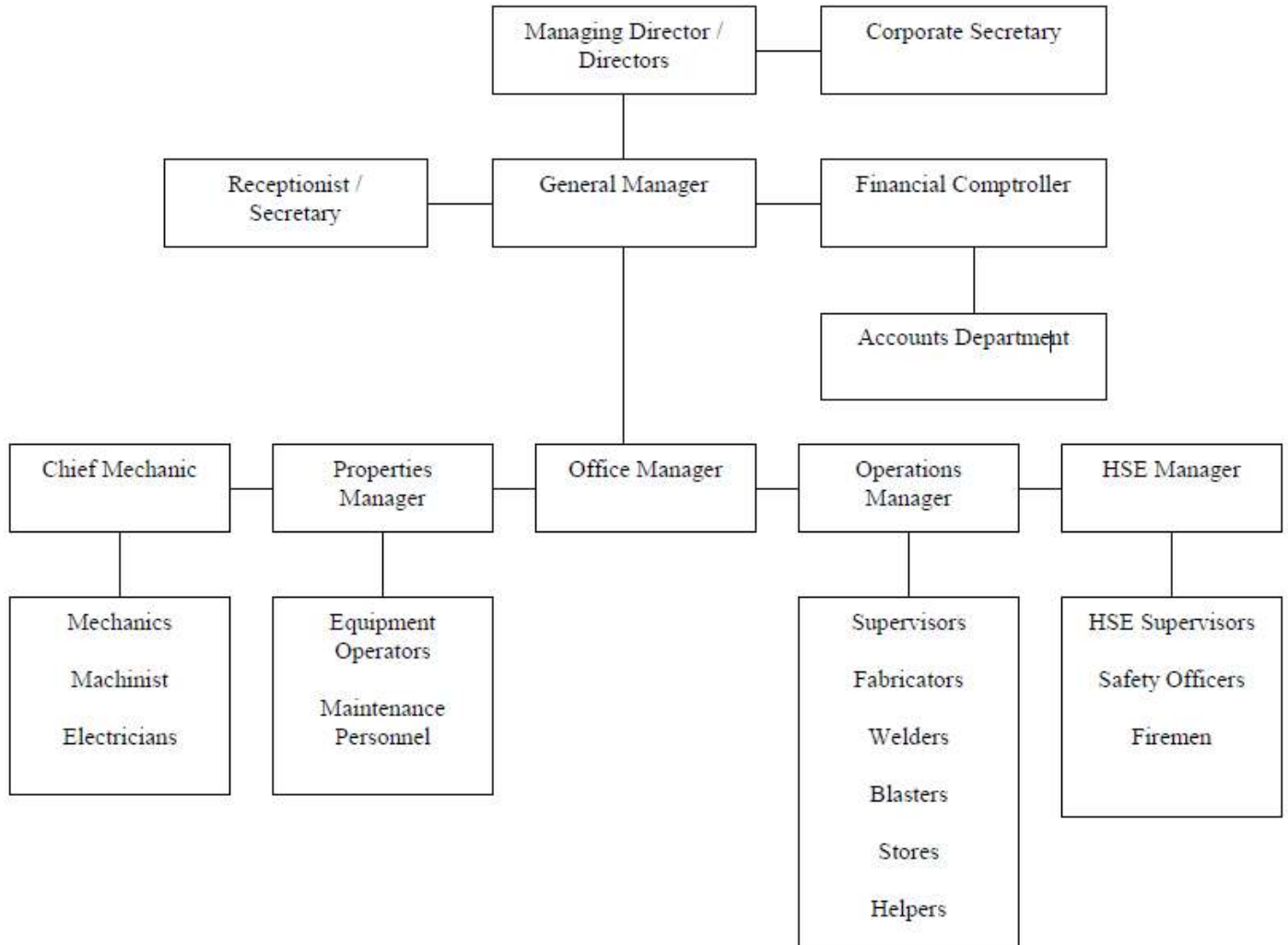
Structural repairs on the Spool Reels for the drilling barge OCEAN BARONESS in our Chaguaramas Workshop.

### **TRINIDAD, Chaguaramas**

Sandblasting and painting of a supply boat "Erin Bay" for Eric Miller & Company Limited



## Inter-Isle Construction and Fabrication Co. Ltd. Organization Chart





## **STATUTORY REGISTRATION IN TRINIDAD AND TOBAGO**

Registration of Companies - October 18, 1989

Certificate File No. I - 436

National Insurance Board - September 10, 1990

Certificate No. P53152

Ministry of Finance - August 25, 1992

Board of Inland Revenue

Certificate File No. 1122123

Ministry of Finance - November 01, 1992

Value Added Tax (VAT)

Certificate No. 108740

## **INSURANCES**

### **Guardian General Insurance Co. Ltd.**

Princes Court,

Keate Street,

Port of Spain

Trinidad, West Indies

### **Tatil Insurance Co. Ltd.**

11 Maraval Road,

Port of Spain

Trinidad, West Indies

### ***Type of Insurance Value***

Workmen Compensation - \$2,500,000.00

Public Liability - \$6,300,000.00



## Our Contact Information:

### *Inter-Isle Construction & Fabrication Company Limited*

Mailing Address:

P.O. Box 4445, St. Anns Post Office, Port of Spain, Trinidad, West Indies. Operations Manager

Operations Address:

Western Main Road, Chaguaramas, Trinidad, West Indies.

Email Address: [info@interisle.com](mailto:info@interisle.com)

Website: <http://www.interisle.com>

**Telephone:** 868-634-4229 / 4266 / 2370

**Fax:** 868-634-4145

### **Contact Personnel:**

Sean O'Connor – Managing Director

Nizam Mohammed – Operations Manager

Walter Leung – Project Coordinator

